

BIMBIA RURAL DEVELOPMENT ASSOCIATION

BIRUDA – CAMEROON

Registration No. 131B.37/D14/VOLII/SAAJP

ANNUAL REPORT

YEAR ENDED 30 SEPTEMBER 2024



BIRUDA



BIRUDA

TABLE OF CONTENTS

- a. List of Partners
- b. List of Projects
- c. Governing Board Members
- d. Introduction
- e. Activities for the year 2024 at a glance
- f. Financial Year 2023-24 at a Glance
- g. Balance sheet
- h. List of Office Addresses

A List of Partners

NATIONAL (CAMEROON)

GOVERNMENT INSTITUTION

- 1 Fako Divisional Delegation Ministry of Women and Social Affairs
- 2 Women and Empowerment Center, Limbe
- 3 Ministry of Forest and Nature Protection
- 4 Ministry of Tourism South West Region
- 5 Limbe III Council - Bimbia
- 6 Ministry of Agriculture, Bimbia
- 7 Ministry of Youth and Sport

PRIVATE CORPORATION AND ASSOCIATION

- 1 Forest and environmental centre for sustainable development
- 2 Bimbia Bonadikombo Natural Resource Management Council
- 3 Organization of gender and civic engagement
- 4 Environmental protection and development association
- 5 Unity sisters

INTERNATIONAL

- 3 Foucause, blackbaud
- 4 Protect an acre, usa

b List of Projects

| FUNDING | PROJECT |
|--|--|
| Lush S.A Canada | Fight deforestation of Bimbia forest |
| | Fight girls trafficking |
| PNDP | Building local nursery |
| | Train farmers on grafting, |
| | Promotion of Agriculture Production Clusters(APCs) in tribal regions of Bimbia |
| | Promotion of Agriculture Production Clusters (APCs)intribal Regions of Bimbia |
| | Up scaling Farming Aligned with Nature across Agro ecologies in MP |
| | Limbie III Council Effective Implementation of MGNREGA in Watershed mode rejuvenating seven rivers in Western part of West of Bimbia towards augmentation of livelihoods of the community |
| Education for Employability Foundation (E2F) | Facilitating the Implementation of Integrated Farming Cluster (IFCs) in 10 State in India |
| | Facilitating the implementation of Integrated Farming Clusters (IFCs) |
| FICCI Socio Economic Development Foundation (FICCI-SEDF) | Resurgence of Rural Economy Based Livelihoods to tackle the Covid-19 crisis (REFRESH) |
| Integrated Youth and Empowerment Centre (IYEC) | Building Leadership for change – Development Apprentice |
| Rain matter Foundation | Triggering large scale transformation of the lives of tribal and marginalized communities in central and southwest regions of Cameroon achieving a long-term sustainable economy through a strong integration between ecological, social and economic factors. |

C. Governing Board Members

| List of Members | |
|--------------------|--|
| Charles Weloa | Bimbia Traditional Ruler-Board President |
| Sally Okie Ojah | Board Secretary |
| Ester Feing | Board Treasurer |
| Raymond Monjoa | Board Financial Secretary |
| Sally Ojah Okie | Secretary |
| Emmerencia Nah | Leader Of Works |
| Sylvia Kye | Disciplinary Committee Leader |
| Peter Monjwe | Project Committee Leader |
| Belus Njoh | Land Committee Leader |
| Evelyn Mocha | Advisory Committee |
| Emmanuel Widing | General Coordinator |
| Oliver Ela | Local Committee Representative |
| Nji Cho | Member |
| Dennis Nkomo | Member |
| Christabel Fonbang | Member |
| Ndumbe Molongo | Member |
| Cletus Cho | Member |
| Philip Njoh | Member |
| Hudson Njie | Member |
| Bongong Denis | Member |
| Fanny Ngale | Member |
| Ngale Jacob | Member |
| Njalla Fru | Member |
| Stephen Ndumbe | Member |
| Mary Okie | Member |
| Francisca Mbe | Member |

D. Introduction

In 2024 we advocate the rights of the Bimbia indigenous people to control their forest. It creates awareness and deters Cameroon Development Corporation (C.D.C) from destroying 450ha of Bimbia indigenous forest to open palms plantation. It also designed a simple management plan for Bimbia forest. On the 30th March 2023, the Bimbia people staged a small protest (blockade, occupation) which caused the S.D.O to sign a prefectural Order prohibiting C.D.C to open plantations into the Bimbia traditional forest. Bimbia elites applied and received a court order that upheld this ban and further stop other illegal activities in the Bimbia forest including wildlife poaching. With the help of the Lush funds, we introduce a reforestation programme and constructed two nurseries with propagators at Chopfarm and Mabeta New layout. Seedlings multiplied were planted in degraded areas of the forest.

We effectively began in January 20, 2024 with the organization of planning meeting at the Bimbia council that set up the plan of actions for subsequent activities. A total of 14 meetings (5 with community leaders and 9 social groups) were held with the following social and active groups - Unity Sisters, Good Friends, Give Air, Chop Farm Farmers Association, Catholic Women Association, Charcoal Burners Association, Timber Exploiter Union, Young Farmers Association, and Bee Keepers Union. See Fig 2,3,4,5 and 6



Figure 2



Figure 3



Figure 5



Figure 4



Figure 6

E. Activities for the year 2024 at a glance

Through the help of Lush funds, we hire a botanist and volunteer workers from the Ministry of forest, Mr. Tekeh Athanasius and Mr. Patrick Nimba who to carried out a 2 weeks feasibility studies of the forest to access the level of destruction and damage C.D.C have already done by clearing 6ha forest. See Fig 7,8,9, 10 and Table 1 below for result.

Note: The information below records trees whose diameters is greater than 0.4m and height above 4m.

Table. 1

| Plant Resources | | | | | |
|----------------------------|-----------------|------------------|--------------------------------|----------------|------------------|
| Scientific names | Common names | No. Trees damage | Scientific names | Common names | No. Trees damage |
| <i>Afzelia spp.</i> | Doussie | 18 | <i>Staudtia kamerunensis</i> | Bobo | 10 |
| <i>Alstonia congensis</i> | Milk Stick | 15 | <i>Strombosia grandifolia</i> | kerosene wood | 05 |
| <i>Carapa procera</i> | monkey no climb | 3 | <i>Terminalia superba</i> | akom | 04 |
| <i>Ceiba pentandra</i> | Boma | 21 | <i>Tetra pleura tetraptera</i> | esekeseke | 15 |
| <i>Chrysophyllum</i> | Yellow leaf | 24 | <i>Uapaca guineensis</i> | bush matanda | 25 |
| <i>Coelocaryon preussi</i> | Man carabod | 45 | <i>Bambusa spp</i> | Indian bamboo | 15 storms |
| <i>Cola laterita</i> | Big leaf | 20 | <i>Panda oleosa</i> | poga | 23 |
| <i>Desbordesia</i> | Mango wood | 09 | <i>Piptadeniastrum</i> | small leaf | 18 |
| <i>Entandrophragma spp</i> | Mahogany | 06 | <i>Pterocarpus soyauxii</i> | Camwood | 22 |
| <i>Ficus mucuso</i> | Sand leaf | 15 | <i>Pycnanthus angolensis</i> | woman carabod | 33 |
| <i>Khaya anthotheca</i> | Mahogany spp | 04 | <i>Musanqa cecropioides</i> | Umbrella stick | 55 |
| <i>Lophira alata</i> | Iron wood | 18 | <i>Nauclea diderrichii</i> | opepe | 41 |



Figure 8



Figure 7

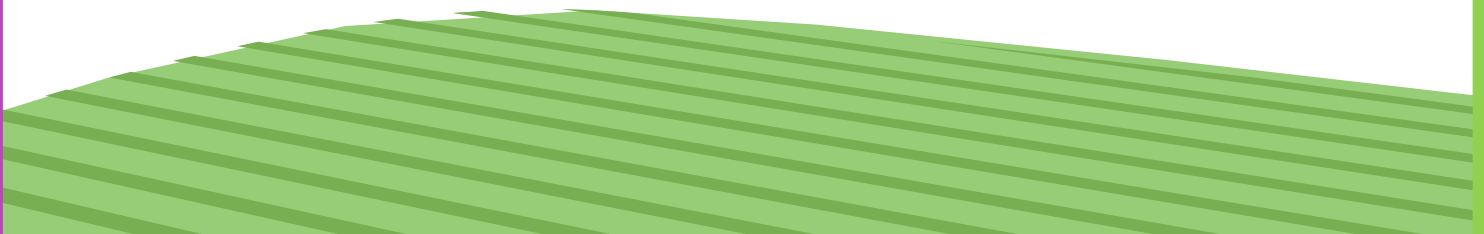


Figure 9



Figure 10

During the feasibility studies it was discovered that over of 758 of our traditional trees were also transformed by C.D.C into timbers and sold to a nearby Chinese timber companies by name Xinfung Gi Timber international without our concerned or consultation. See Fig 7 and 10 above



The Bimbia people encountered so many challenges to achieve phase 1 of this project which was to get a prefectural injunction and court order to restore the rights to control our forest resource. It took place during the time that when Anglophones-Cameroonians (including Bimbia) had political crisis. Street demonstrations and protest were strictly forbidden. However, after serious discussions we managed to receive a permit to carry out rallies and our meetings. Over 215 local residents's carried out occupation and blockade at the divisional office building. See Fig 11, 12, 13, 14, 15 and 16. Mobilize the Bimbia traditional ruler to request formally for a permanent injunction from the Fako-SDO and the Limbe court of first instance. This work has given BIRUDA members the opportunity to meet elders who matter much in our society and also give us the chance to know the culture and traditions of the village which are the fundamental issues in serving our society.



Figure 11



Figure 12

- Organizing community member to carry out protest by a March past with green ribbon, posters and banners.



Figure 14



Figure 13

- Rallies, occupation and blockade



Figure 16



Figure 15

Actions

The design of the simple management was too complicated and time consuming that we had to carry out this exercise alongside the previous activities. We demarcated Bimbia forest boundaries, with a total of 22 beacons planted along the limits with Bamukong village and a cadastral site and situation plan drawn. See table 2 for beacons coordinates and Fig 17 and 18. The project team worked jointly with the MINFOF officials and was able to create a committee that will monitor the project after its completion. We also establish 2 nurseries one at Chopfarm and the other at Mabeta new layout. See picture below.

Table 2, Coordinates of the Beacons

| | |
|--|--|
| WP,UTM,WP01,32N,527337,438866,02/13/2023,8:22:24,,A,N,205.1 | WP,UTM,WP12,32N,531627,439519,02/14/2023,18:22:24,,A,N,29.2 |
| WP,UTM,WP02,32N,528316,438584,02/13/2023,8:58:22,,A,N,62.6 | WP,UTM,WP13,32N,531607,440561,02/17/2023,18:22:24,,A,N,43.7 |
| WP,UTM,WP03,32N,527732,438374,02/13/2023,11:02:24,,A,N,161.1 | WP,UTM,WP14,32N,530901,441848,02/17/2023,18:22:24,,A,N,67.7 |
| WP,UTM,WP04,32N,528800,438270,02/13/2023,12:32:24,,A,N,29.2 | WP,UTM,WP15,32N,530996,443494,02/17/2023,18:22:24,,A,N,70.8 |
| WP,UTM,WP05,32N,529341,438118,02/13/2023,13:20:24,,A,N,26.1 | WP,UTM,WP16,32N,529435,443570,02/17/2023,18:22:24,,A,N,93.5 |
| WP,UTM,WP06,32N,529931,438193,02/13/2023,13:22:24,,A,N,54.3 | WP,UTM,WP17,32N,528196,443551,02/17/2023,18:22:24,,A,N,105.4 |
| WP,UTM,WP07,32N,529971,438654,02/13/2023,14:02:44,,A,N,16.8 | WP,UTM,WP18,32N,529015,442338,02/18/2023,18:22:24,,A,N,228.8 |
| WP,UTM,WP08,32N,529534,439174,02/14/2023,08:29:24,,A,N,26.4 | WP,UTM,WP19,32N,527853,442339,02/18/2023,18:22:24,,A,N,283.5 |
| WP,UTM,WP09,32N,529707,439617,02/14/2023,09:22:24,,A,N,28.2 | WP,UTM,WP20,32N,527606,441732,02/18/2023,18:22:24,,A,N,228.3 |
| WP,UTM,WP10,32N,529983,439636,02/14/2023,18:22:24,,A,N,28.4 | WP,UTM,WP21,32N,527301,440881,02/18/2023,18:22:24,,A,N,144.0 |
| WP,UTM,WP11,32N,531093,439141,02/14/2023,12:55:25,,A,N,38.4 | WP,UTM,WP22,32N,527301,440161,02/18/2023,18:22:24,,A,N,222.8 |



Figure 18



Figure 17

The reforestation programme started with the construction of two standard nurseries including propagators. See Fig 19 and 20. It was closely supervised by MINFOF and BIRUDA. Noble Tanga and Emmerencia Nah were appointed as care takers of the nursery. Over 875 trees of different species have already been produced from these nurseries. See Fig 21 and 22. The project team had difficulties to get all the land documents and had to sign a 7 year renewable agreement with the Mr. Gregory Fontem - the land owner. We are looking forward to get a permanent site. Fig 21, 22, 23 and 24 are mature plant ready for planting in our standard nurseries.



Figure 20



Figure 19



Figure 22



Figure 21



Figure 24



Figure 23

Lesson learnt

Project design involving local people, stakeholders and resources was very successful. The level of complains of deforestation has reduced. When we plan a project, we should take the negative impact into consideration. For example, many locals who cannot have access to some of the facilities have possibility to feel demoralized and inferior in the society.

Below you will find a conflict management that was jointly design the MINFOF and the local committee that will be in place and implement to make sure the project continues after its completion. Bimbia people welcome this plan and has express interest to continue with the plan. The Bimbia people hopes the plan will be successful and well implemented.

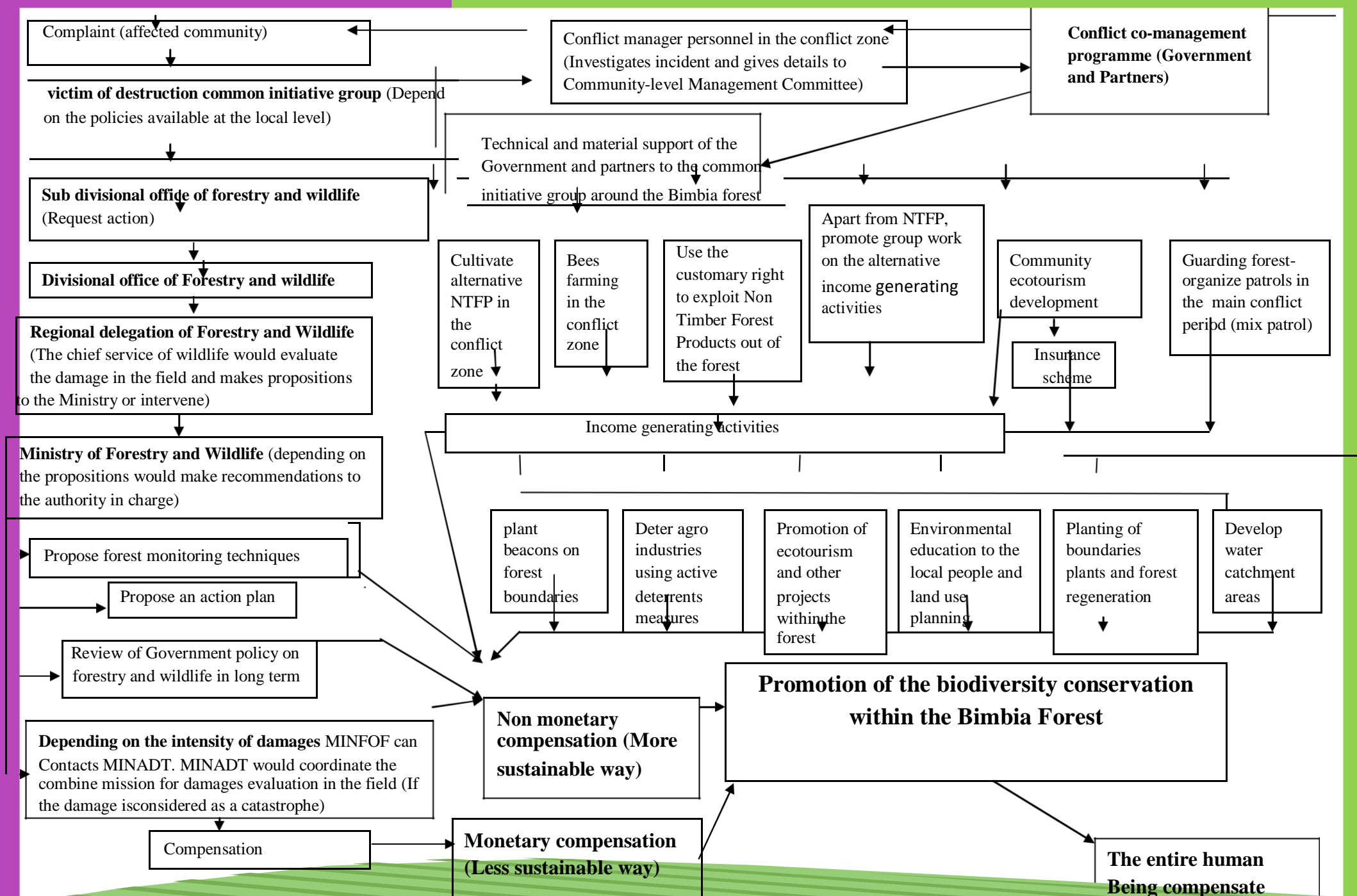


Figure 18: strategy for the management of Bimbia Forest

Acknowledgements

The Bimbia Rural Development Association appreciates all those who contributed directly or indirectly for the success of this project. Special thanks to the Lush Charity Pot team and the honorable donor for their excellent financial support, and their continuous efforts in trying to make the World a better place.

The grant amount was 4,895.00. but the entire project was 6,485.00 all in USD. We did achieve all our goals to deter Cameroon Development Corporation from destroying our traditional forest to open palm plantation. This project advocates the rights of the Bimbia indigenous people to control their forest. It creates awareness and deters Cameroon Development Corporation (C.D.C) from destroying 450ha of Bimbia forest to open palms plantation. It also designed a simple management plan for Bimbia forest. On the 30th March 2023, the Bimbia people staged a small protest (blockade, occupation) which caused the S.D.O to sign a prefectural Order prohibiting C.D.C to open plantations into the Bimbia traditional forest. Bimbia elites applied and received a court order that upheld this ban and further stop other illegal activities in the Bimbia forest including wildlife poaching. With the help of the Lush funds, we introduce a reforestation programme and constructed two nurseries with propagators at Chopfarm and Mabeta New layout. Seedlings multiplied were planted in degraded areas of the forest.

People leaving with disability in Bimbia-Cameroon and its surrounding communities suffer severe discrimination and exclusion in all aspect of their lives. This project fight against stigma, prejudice and stereotype leading to the exclusion and discrimination of over 1,500 disabled people and their families in Makuka, Mawoh, Mabeta newlyout, Bonadikombo, Lawanda, Bimbia (Bonabile, Bonangombe, Dikolo) and Man O War Bay camp area. It also addresses what would be done to improve their lives.

The international day of persons with disability is mark on December 3 each year. An estimated 10-15 hundred people are living with disability in these areas. See attachment - annex 1. Though they have many legal protections since 2016, they still face many challenges, including neglect, torture in homes and schools, unemployment, segregation, leaving in abusive conditions, abandonment, poverty, together with families sometimes being ostracize and face exile. Here disable people are treated badly – 350 children with disability are hidden in homes and orphanages; 300 kids with disability don't go to school. Even graduates, when they looking for a job as a person with disability, they are denied because of their situation.

Parents of People with disability also face a lot of stigma. 95% of their mothers with disable children are actually belief to have sin, and the child with disability is as a result of that, and is a punishment. The situation has worsen up to the point when a child with disability is born, the mother is told - you must have been unfaithful, or you must be course and the child is now also a course. So their mothers face severe pressure to actually get rid of their child. BIRUDA conducted a 2 year investigation in 2021-2023 and interviewed mothers of children with disability, around 73% said that they were pressure to give up their child. And actually this number was higher in the suburb areas, close to 90%. They were also told that is because their child is course, they are course, sinners and they need to get rid of their baby so that the course does not spread to the family, to the extended family, and to the community, So they have to be ostracize by their whole community, and being ask to leave if they refuse to get rid of their child. In Bakweri clan disability is culture wise. Here, people belief that these children are probably a course, or mad or they are been bewitched. All these are making parents, not coming out, not being comfortable, and not accepting who these children are.

We also found that these churches (Church of Christ, Jehovah witness, Christ embassy, True church of God) here has focus on creating orphanages, or homes for children with disability, where they are often abused. Missionaries from especially Europe, the USA and Canada and also churches from these countries send money to create these orphanages. From our findings, this is actually creating an incentive to recruit children with disability from vulnerable areas to put them in this institution. That is actually an incentive for segregation instead of actual support and inclusion. We saw cases of exploitation of children in Spring orphanage, keeping them in worse possible conditions and trying to actually get as many children as possible in an orphanage, in abusive conditions to generate pity, and also to attract donations.

Though the local government has put laws protecting people with disability, but when it comes to enacting these laws, that is where the problem is. Local government agencies claim, they understand the people with disability are here, but they allow them to deal with themselves without any support. The government only think of other pertinent issues such as Anglophone crisis and that which generate income, rather than spending money on disable people, where it is belief to have no achievement. Once government officials start to realize people with disability are equal to them, we think they will begin to enact the law and then straighten it out.

Lastly, Misconception of religion is also a big concern. Because often times, it is thought that even in the Bible disability is sometimes refer to as a result of punishment, even though Jesus clearly said it is not a result of sin (John 9 verse 1-3). But this misconception from biblical times is still very much present in other part of Cameroon not only in Limbe.

All these combine with the general community not having knowledge and understanding on the different types of disability, especially autism, visually impaired and psychosocial disability make it painful for disable people. They are torture or severely beating at home or school when ask to do something they are unable do. Particularly patient with autism

With this background, BIRUDA and Limbe Disability Right Association are working closely since 2020 to improve the lives of disable people . On the 18th -20th of December 2019, a meeting was held with stakeholders including Limbe City Council to implement the following resolution arrived at:

1. Conduct a proper census to get the appropriate data and submit a report to the government to allocate the right resources for people leaving with disability.
2. Biruda and Limbe Disability Right Association should advocate to push the local government to act following:
 - A. Orderly close orphanages and taking children back to their families
 - B. Introduce Alley Childhood Intervention in schools
 - C. Enact laws and organize reforms for people leaving with disability
 - D. Encourage local authorities to include disable people to have 3 or more seat in the Limbe council
 - E. To put in a policy to employ all persons with disability especially graduate who have struggle and complete university and are in the house
3. Create platform with the government to have further engagement (workshops, events)
4. Form a strong association of disable people and also look for strong allies (local, national and international partners) to fight on for the proper implementation in the domestication of the UN convention.

See Link:

5. Educate the community and train people leaving with disability.

How does this work advance the issue you are addressing? On the part of the government, impact will be measure on the number of reforms and development of more inclusive engagement mechanisms. The inclusion of 3 seats at the local will give added value to our program. Even government willingness to seat and dialogue is also a great impact.

The senior divisional officer will stop issuing permit to open new orphanage.

Also the closure of a number of orphanages and the number of children who are return voluntarily to their homes.

There number of incentives for people who employ disable people will increase. This range from task holiday work to businesses who decided to employ people with disability.

The number of people who hire disable people will increase.

The amount government resources allocated to assist disable people and their related organization on education and training teachers will increase

The establishment of local censures, for a proper way of collecting aggregate data by disability

The number of schools which introduce the alley childhood intervention

There will be lots of drastic changes happening, and when it comes to disability, particular a lot on education and religion. In church Pastor will begin a sermon and service that encourages parents to accepts their children, then changes can begin from there.

There will also be a Change in the narrative and changing the narrative begin with using the information we have to tell a different story and I belief that and that the work I do

Parents will order be able to know what their children are good at and give them the proper examination to determine what is it that they have and to also pay attention to their child

On the part of the government, impact will be measure on the number of reforms and development of more inclusive engagement mechanisms. The inclusion of 3 seats at the local will give added value to our program. Even government willingness to seat and dialogue is also a great impact.

The senior divisional officer will stop issuing permit to open new orphanage.

Also the closure of a number of orphanages and the number of children who are return voluntarily to their homes.

There number of incentives for people who employ disable people will increase. This range from task holiday work, to businesses who decided to employ people with disability.

The number of people who hire disable people will increase.

The amount government resources allocated to assist disable people and their related organization on education and training teachers will increase

The establishment of local censures, for a proper way of collecting aggregate data by disability

The number of schools which introduce the alley childhood intervention

There will be lots of drastic changes happening, and when it comes to disability, particular a lot on education and religion. In church Pastor will begin a sermon and service that encourages parents to accepts their children, then changes can begin from there.

There will also be a Change in the narrative and changing the narrative begin with using the information we have to tell a different story and I belief that and that the work I do
Parents will order be able to know what their children are good at and give them the proper examination to determine what is it that they have and to also pay attention to their child

Production and Commercialization of Bush Mango seeds (ogbonor) in the Bimbria village



Implementing organization: Bimbia Rural Development Association (BIRUDA)

These women have constructed a nursery with a propagator to multiply bush mango for domestication. This shall increase yields overtime. See picture1, 2and3 below. They have agreed to form a small association known as Bimbia Women Development Association with bylaws binding them together. Funds will be shared. They will bank their profit in a local credit union for credit worthy and will reinvest the profit toot her sector of the business. They have also agreed to do development projects. They agreed to form a football club and a dance group that will take part in any activities of social inkling. They also agree to sell shares of the business and have also introduced anannualfeeof10.000frsto increase capitals for the business to grow.



Available resources and local contribution

Bimbia has a primary rich forest with abundant trees of bush mango ranging from about 1,200–2,250 trees from inventory analysis. Each tree of bush Mango tree produces 5 bags of wet weigh seeds. The women will collect this bush mango free from their forest.

They will take user rights permits from the village traditional council to exploit forest for their there by the Bimbia development association will exploit the bush mango from their forest free of charge

The women will provide the labour force needed for the growth and success of this project.

Mats that will be use in the drying of the bush mango (kwarakwara) shall be produce by members of the Bimbia development association. The material use manufacture the mats will come from bamboo.

Nature, duration and budget of the project

This project will alleviate poverty among women residing in Bimbia village through the collection, cutting, extraction (removing of the seed from the fruit) and drying between the periods of July to December 2019. See table 1 below



Bimbia forest has approximately 1,000 trees bush mango

For a start this project shall exploit 200 trees of bush mango

1 bush mango tree produces about 5 buckets of cracked seed (wet) (1 bucket measuring 15 litres)

Total production for 200 trees = 5 buckets x 200 trees = 1,000 buckets of wet ogbonor

After drying 1,000 buckets of wet ogbonor produces = 668 buckets dry ogbonor

Market analysis

1 bucket of dry ogbonor cost = 32,500 frs cfa (55.79\$)

Operational and action plan

Goal : production and commercialization of bush mango seeds (ogbonor)

| Objective | Activity | Task | Resource person /personnel | Timeframe | Assumption |
|--------------------------------|--|--|--------------------------------|----------------|--|
| Preparation | Set up an office and ogbonor storage facility | Look for a good business office site | BIRUDA president | September 2019 | Funds are available from Lush S.A |
| | | Buying of office materials | BIRUDA members | | |
| | Employment of labour | Cleaning and arranging of office | BIRUDA | September 2019 | All BIRUDA are healthy and strong |
| | | Hold meeting to select business operators and leaders from BIRUDA | Limbe Women Empowerment Centre | September 2019 | Limbe Women Empowerment Centre is ready to provide technicians |
| Production of bush mango seeds | Training on bush mango collection, cracking, extraction and drying | Organize a workshop | Limbe Women Empowerment Centre | September 2019 | Limbe Women Empowerment Centre is ready to provide technicians |
| | | Follow-up visit after workshop | | | |
| | Training on financial management and book keeping | Organize a workshop | Limbe Women Empowerment Centre | September 2019 | Limbe Women Empowerment Centre is ready to provide technicians |
| | | Follow-up visit after workshop | | | |
| | Setting up of farm house for collection, extraction and cracking | Assembling materials | BIRUDA members | October 2019 | BIRUDA are dedicated for the job |
| | | Building of farm house | Local carpenter | | And that Funds are available from Lush S.A |
| | Collection, cracking and extraction | Collection of bush mango | 54 BIRUDA members | October 2019 | BIRUDA are dedicated for the job |
| | | Cracking of bush mango | | | Absence of environmental hazards such as floods, landslides |
| Marketing / sales | Transportation | Extraction of bush mango | | | |
| | | Transportation of processed bush mango (ogbonor) from the bush to collection point | All BIRUDA members | October 2019 | BIRUDA are dedicated for the job |
| | Drying | Transportation of ogbonor from the collection point to the store | Local Motorbike riders | October 2019 | And that Funds are available from Lush S.A |
| | | Daily drying of ogbonor under the sun | 2 BIRUDA organizing secretary | October 2019 | Roads passable through all seasons |
| | advert | Looking buying agents explaining using Word of mouth | All BIRUDA members | November 2019 | Favorable weather conditions as sunlight will be available |
| | | Use a Town crier with a Mega phone to advertise in quarters | BIRUDA publicity secretary | | No major threats anticipated or recorded |
| | sales | Measuring of ogbonor during sales | 4 BIRUDA members | November 2019 | Demand and price for bush mango is always high and stable |
| | | Issuing of receipt to buying agents customers during sales | BIRUDA financial secretary | | |
| | | Deposit of cash to Bimbia Credit union and financial records to BIRUDA treasurer | BIRUDA financial secretary | | |

BUDGET ANALYSIS FOR PRODUCTION OF 668 BUCKETS OF OGBONOR

| Description | Item | Quantity | Cost per unit | Total amount | Amount requested from Lush S.A | Amount provided by Bimbia women and others | Justification |
|--|-----------------------------------|----------|---------------|------------------------------|--------------------------------|--|--|
| Labour cost | One Manager | 4 months | 70,000 | 280,000 | | 280,000 | BIRUDA president, secretary And social secretary has opt to volunteer this job |
| | One Secretary/accountant | 4 months | 50,000 | 200,000 | | 200,000 | |
| | One Store keeper | 4 months | 40,000 | 160,000 | | 160,000 | |
| Equipments | 54 Collectors, cracker extractors | 4 months | 7,000 | 10,500,000 | | 10,500,000 | Members of BIRUDA will opt to supply this labour |
| | 2 Dryer | 4 months | 40,000 | 320,000 | | 320,000 | |
| | Transportation | 375 | 10,000 | 375,000 | 375,000 | | Lush S.A will fund provide the much needed funding for this project |
| | Cutlass | 20 | 2,500 | 50,000 | 50,000 | | |
| | Knives | 27 | 100 | 2,700 | 2,700 | | |
| | Bags (50 kg) sacks | 54 | 250 | 13,500 | 13,500 | | |
| | | 20 | 200 | 4,000 | 4,000 | | |
| | Measuring buckets | 3 | 1,500 | 4,500 | 4,500 | | |
| | files | 20 | 1,000 | 20,000 | 20,000 | | |
| | Drying mat | 10 | 4,000 | 40,000 | 40,000 | | |
| | tapoline | 7 | 8,000 | 56,000 | 56,000 | | |
| | Bags 100kg | 10 | 500 | 50,000 | 50,000 | | |
| | Office equipment | - | - | 50,000 | 50,000 | | |
| | Store rent | 4 | 15,000 | 60,000 | 60,000 | | |
| | electricity | 4 | 2,500 | 10,000 | 10,000 | | |
| | Running cost | 4 | 20,000 | 80,000 | 80,000 | | |
| | table | 3 | 15,000 | 45,000 | 45,000 | | |
| | chairs | 6 | 8,000 | 48,000 | 48,000 | | |
| | desktop | 1 | 60,000 | 60,000 | 60,000 | | |
| | advert | 1 | 10,000 | 10,000 | 10,000 | | |
| | Environmental impact notice | 1 | 3000,000 | 300,000 | 300,000 | | |
| Training on bush mango collection, cracking, extraction and drying | | 1 | 30,000 | 30,000 | | 30,000 | Women Empowerment Centre shall invite trainers based in Limbe |
| Training on financial management and book keeping | | 3 | 30,000 | 90,000 | | 90,000 | |
| Total cost | | | | 12,858,700 (22,057\$) | 1,278,700 (2,194\$) | 11,580,000 (19,869\$) | |

N/B

Looking at the Total cost in the budget outline above, labour and training cost(11,580,000frs) which is the most expensive item in the production line is carried out by BIRUDA and women empowerment centre in kind (voluntary); therefore the amount needed from Global Fund forRuralDevelopmentis1,278,700frs (total cost 12,858700—cost of labour and training 11580,000).

Goal: Stop girls trafficking, violence against women and helping vulnerable women to establish small business in the production and sale of Bush Mango Seed (Ogbonor).

| activity | method | Reason | Duration | Personnel and Venue |
|---|--|--|----------|---|
| To Research and document crimes against women in Bimbia. | We shall Conduct a social survey. 6 Selected women for door to door, to record names, signatures and answer questionnaires sheets. focus group discussion and writing a final report | To know the various crimes committed and number women affected To know in-depth information on how people think and what should be done | 5 days | 6 women shall be selected from the 3 leading women groups (2 from each group), based on their education and their influence. the survey shall take place throughout Bimbia |
| Holding preparatory meetings | Do local announcements. Visit women Njangi groups, Women social group, women farmers | To rehearse or Practice women slogan | 3days | This activity shall involve all women of Bimbia Village community hall and various meeting venue. |
| Production of T-shirt, placards, banners and sign boards. | Women shall be assigned to design T-shirt, banner, 4 sign boards, and 6 placards. | Sign boards shall be at road junctions while the placards would be use for a march past. To make our voices loud and clear | 3days | Work distribution 5 women - banner 5 women - placards 3 women - sign boards At the village community hall |
| Hold peaceful demonstration and occupation, blockade | Over 200 women shall gather at the market square for peaceful marching past on the street. women shall gather at the administrative for their plight to be heard To sing songs of marginalization of women | Present the facts of the research in activity 1 and propose solutions To demand for greater protection | 2-days | Street and the market square |
| Request for Prefectural order and apply for court judgment for Mr. Simon and nine other | The Bimbia traditional ruler and Barrister Epey Asoh shall file a complaint at the court and demand a prefectural order | To stop the traffickers from transporting girls to Nigeria to serve as sex slaves | 2 months | Senior Divisional Office and Limbe Court of First Instance |
| Resettle victims of girls trafficking and sexual violence | Start a small enterprise in the production and sales of Ogbonor (bush mango seeds) | To improve the economic conditions of the victims See detailed explanation in the attachment | 4months | Bimbia forest and Bimbia community See detailed explanation in the attachment |
| Setting up a village task force | BIRUDA shall work with the administration to set up a village vigilante group | This shall be the village task force that will verify and report all illegal activity that takes place in and around our village | 1 day | Bimbia and BIRUDA shall be responsible to select healthy men |

This project aims to reduce girls trafficking and violence against women- in Bimbia, Limbe, southwest region-Cameroon. It also helps women to start a small enterprise in the production and commercialization of Bush Mango Seed (ogbonor) also known as *Irvingia gabonensis*.

Since the beginning of 2016, the population of Bimbia has increased by 15,000 due to the recent Anglophone crisis. Women now constitute 70% of its population. Over 40% of these women ran from the Anglophone crisis zones (Munyenge, Batibo, Bali, Mamfe and Kumbo). In Limbe, these internally displaced women are refugees living in slums, streets, churches with very poor conditions and high rate of sexual violence. They are exposed to human traffickers who offer fake jobs and promise a better life when taking them to neighboring country, Nigeria. These desperate women and girls later found themselves being traded as sex slaves with very little or no wages when they travel to Nigeria. With the closure of some schools, young girls of 16, 17 and 18 years are the most vulnerable and greatly affected. In March 2018, Jersey Nga, Pamela Nfor, Suzan che Domack and nine other victims escaped from their trafficker and took a boat back to Cameroon. They were sexually assaulted as they explain their story. 2011 survey reports (conducted by Women and Empowerment Centre-Limbe) reveal that, 80% of women are not aware of the false pretense and fake promise offered by these traffickers and still want to take this dangerous adventure. Studies also reveal that (05-10) girls are transported monthly by Mr. Kalu Agbor Simon and his network without being apprehended. Due to corruption, the police do not apprehend Mr. Simon and his men of the underworld. The police complain that corrupt judicial officials release these traffickers in court after being apprehended on the grounds that women opt to take the treacherous journey themselves. The area has poor or very limited administrative structures, in the domain the judiciary, health and education etc. Due to this prevalent situation, it has brought lawlessness, female genital mutilation, jungle justice, marginalization of women such as depriving from some basic social facilities like food, no right on widow, depriving girls from schooling, torture, rape, domestic violence. 29 girls have already complained of severe torture and rape just this year alone. On the 12th March 2023, 16 girls were reported missing. Sources reveal that these young girls were abducted. Bimbia is a remote village and a transit zone used by these men of the underworld since it is a border village. It has very poor communication systems making it difficult for the outside world to understand what is taking place here. Due to the outcry of the women fold, on the 5th of January 2023, Sally Ojah Okie and 9 influential women held a meeting at the Bimbia council hall and drew up this action plan to carry out the activities as seen in the attachment.

How does this work advance the issue you are addressing? The impact of this project is felt on many ways.

First it reduces the number of girls who shall book for a boat to travel to Nigeria at the Mabeta fishing port. The fishing port which is widely used to transport young girls to use as sex slave will be closely monitored by our local task force that we shall put in place.

Secondly, crimes committed by men such as marriage by abduction, female genital mutilation, rape, sexual harassment will be readdressed by the state and the court.

The impact is also felt at the level of the Bimbia village community. This project shall help bring solidarity amongst community members. Bimbia people will increase their effort to speak with one voice to bring all the culprit to face justice. It will also bring fear amongst those who unscrupulous individual including the men of the underworld who do this bad business.

The added value of this project came from the economic empowerment of women by establishing an enterprise in the production and commercialization of bush mango seed. see attachment. It provides the much needed cash that women need to provide basic food and service for themselves and families

Where the grant-funded work will take place Limbe

Total amount requested in CAD or USD

Currency

Total Amount Requested

Amount

USD

6,600.00

Total project budget in CAD or USD

Currency

Total Project Budget

Amount

USD

9,294.00

The Lush Funding You Received

The grant amount was 4,895.00. but the entire project was 6,485.00 all in USD. We did achieve all our goals to deter Cameroon Development Corporation from destroying our traditional forest to open palm plantation.

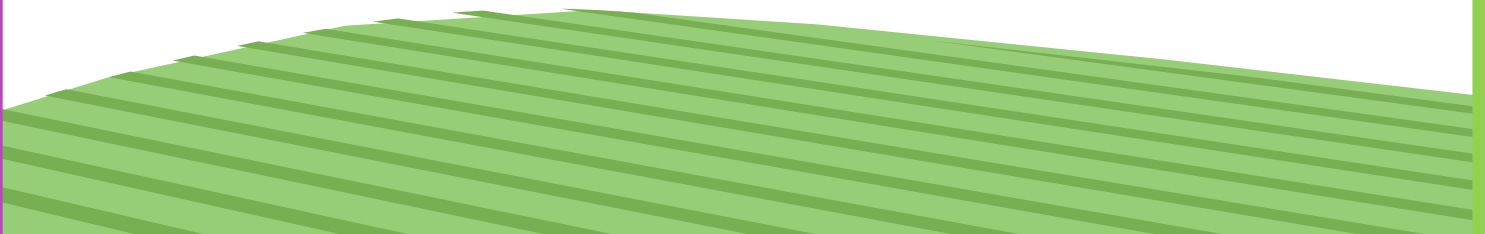
This project advocates the rights of the Bimbia indigenous people to control their forest. It creates awareness and deters. Cameroon Development Corporation (C.D.C) from destroying 450ha of Bimbia forest to open palms plantation. It also designed a simple management plan for Bimbia forest. On the 30th March 2023, the Bimbia people staged a small protest (blockade, occupation) which caused the S.D.O to sign a prefectural Order prohibiting C.D.C to open plantations into the Bimbia traditional forest. Bimbia elites applied and received a court order that upheld this ban and further stop other illegal activities in the Bimbia forest including wildlife poaching. With the help of the Lush funds, we introduce a reforestation programme and constructed two nurseries with propagators at Chopfarm and Mabeta New layout. Seedlings multiplied were planted in degraded areas of the forest.

LUSH ACKNOWLEDGEMENT

We the Bimbia people congratulate all the management of Lush charity pot for all the efforts in helping us to build a good community. Special thanks to all the donors of this funds that your sacrifice or contribution can never be forgotten.

Project management from start to finish is very challenging, and we are a community based organisation that works for the development of Bimbia. Having you as a partner we see it a blessing and we look forward to continue this excellent relationship. Special thanks to Kate Shippam, who having been assisting us through out.

We also pray that as we continue to grow, one day we shall not only contribute to your charity to assist other community, but sponsor responsible projects within our capacity.







F. Financial Year 2023-24 at a Glance

Bimbia Rural Development Association - BIRUDA

(A Not For Profit Association)

Financial statements for the year end 30 September
2024

Report of the Executive
Board to the members of
Bimbia Rural Development Association

The Executive Board presents this financial statement for the year ended 2024.

The executive board is responsible for the preparation and final presentation of this financial statement comprising the statement of financial position at 30 September 2024, the statement of financial performance, and the statement of cash flow. It does not include fixed asset. The board has made this assessment of the ability of the Bimbia rural development association to continue as a going concern and has no reason to believe otherwise in the years ahead.


The result of the year are set out in the financial statement as shown on pages 1 and 2 below.

The principal activities of BIRUDA which aims to support the work of the members whose efforts are geared towards the promotion of sustainable development on the following:

1. Forests and environmental protection
2. Defend the rights and cultural heritage of the Bimbia Indigenous population
3. Promote health, hygiene and sanitation
4. Unite to mobilize resource and capacity to protect Bimbia natural resources.
5. Improve livelihoods 'through saving and loans to start small business

After a review of BIRUDA achievements of the work done over 2024 and stocktaking, the programmes of BIRUDA continue for the year 2024 and beyond. While we will not relent our devotion to exercise tolerance and enforce social justice.

These financial statements of BIRUDA were approved by the Executive Board as mentioned above.


Hon. Charles Wolea
PRESIDENT-BIRUDA

G. BALANCE SHEETH

| Bimbia Rural Development Association Annual Budget analysis for 2024 | | |
|---|---|---------------|
| Description | Item | Amount |
| INCOME | | US\$ |
| Brought forward for 2015 | Six hundred and twenty thousand 620,000 Frs. cfa(1,240\$) | 1,280 |
| Defaulters fines (keep Bimbia clean, other crimes committed in the village) | Fees as penalties levied to defaulters on crimes in the village (not present during local development activities, | 1,250 |
| Fines of illegal exploitation of Bimbia resource | (Poaching, timbers, NTFP, fishing etc) | 1,475 |
| Local contributions, pledges and donations (occasional) | | 1,540 |
| Royalties paid for research and development | | 350 |
| ecotourism, | Bimbia rainforest and tourist visiting slave market | 1,400 |
| Projects | Centre for Natural resource management | 1,150 |
| | Bimbia Local Council (develop Bimbia Health Centre) | 800 |
| | Ministry of agriculture (promote livestock-crop farming) | 500 |
| | Ministry of Forest and Wildlife (tree planting) | 400 |
| | UNFCCC REDD+(designed simple management plan) | 1,000 |
| Community donation | | 1,540 |
| Members contribution and savings | | 800 |
| Fundraising events | Tea party, football, gala nite, auction sales and bazaar | 1,565 |
| Fees for services rendered by BIRUDA | Nursery and mushroom training | 435 |
| Sales of nursery products | 500 Seedling of bush mango, plumb and bitter cola | 675 |
| Subtotal | Nineteen thousand three hundred and sixty dollars | 16,160 |

| EXPENDITURE | | |
|--|--|---------------|
| Office expenses | Purchase of office materials and maintenance of equipment | 520 |
| | Office and land rents for nursery and demonstration farm | 955 |
| | Electricity bills | 70 |
| | Documentation | 240 |
| Project | Health and sanitation (construction of 2 wells ongoing) | 1,250 |
| | Construction of 2 public toilet | 1,200 |
| | Tree planting in chop farm, Bonabile, Bonagombe and Dikolo | 600 |
| | Forest Patrols expenses to stop illegal poaching, logging | 1,400 |
| Organize meetings | 2 Board meetings, monthly meetings | 350 |
| communication | Postage, telephone bills, airtime, internet | 300 |
| Transport | Fuel and transport fares | 475 |
| Media | Radio interview, announcements | 200 |
| Forest and environmental protection | Conduct forest patrols | 755 |
| | Tree planting | 420 |
| Loans | Loans to members to start small business | 1900 |
| Tourism | Cleaning of Bimbia Nature trail | 450 |
| | Cleaning of Bimbia Historical slave market | 550 |
| | Stipend to eco guards | 400 |
| Seminars and workshops | Climate change, agriculture & forest management workshop | 1,500 |
| Legal fees | Court charges, lawyer fees, summon, bailiff | 650 |
| Volunteers expenses | Stipend, training and development assistance | 460 |
| subtotal | Eighteen thousand five hundred and seventy-five | 14,645 |
| | | |
| Net Balance (Carry forward to 2016) | One thousand five hundred and fifteen | 1,515 |

H. . LIST OF ADDRESS

BEKOH KEJI JEROME

EMAIL : kjerry87@yahoo.com

00234675601497

SALLY OKIE OJAH

EMAIL : sallojah@yahoo.com

00237679550681